

**Bijlage bij het BENOR productcertificaat nr. 270/2046/0046 uitgereikt op 19.06.2026.**

**Productie-eenheid:**

ESF Elbe-Stahlwerke Feralpi GmbH  
Gröbaer Strasse, 3  
DE-01591 RIESA

Telefoon: +49/352 574 90  
Fax: +49/352 574 910 9  
E-mail: info@feralpi.de

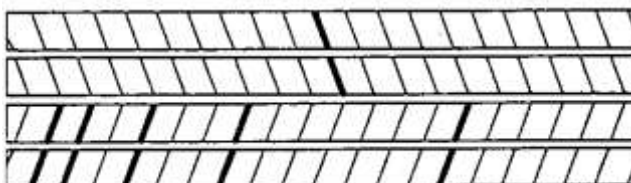
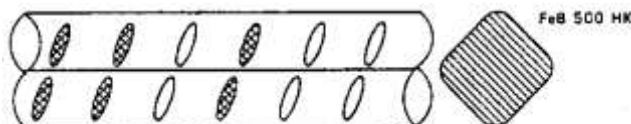
**Walsmerk: 0/1/2/6**

**Producten:**

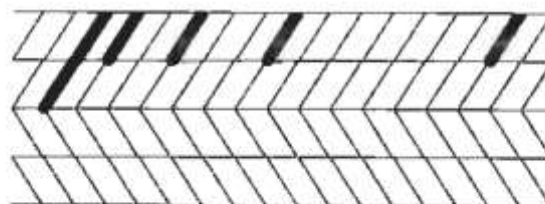
**GEWALST BE 500 S**  
**STAVEN Diameters 10 - 40 mm**



**GEWALST GEREKT BE 500 TS**  
**BOBIJNEN Diameters 8 - 16 mm**  
**STAVEN Diameters 8 - 12 mm**



**GEWALST GEREKT BE 500 TS FWR**  
**BOBIJNEN Diameters 6 - 20 mm**  
**STAVEN Diameters 6 - 14 mm**



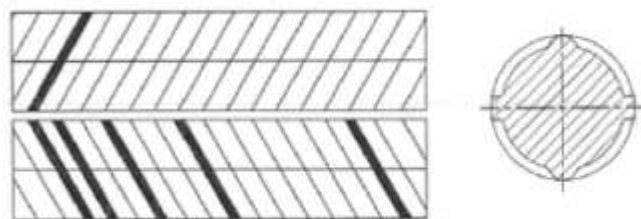
*0 1 2 6 op 1 ribrij*

**GETROKKEN DE 500 BS**  
**BOBIJNEN Diameters 6 - 12 mm**  
**STAVEN Diameters 6 - 12 mm**





**GEWALST BE 500 S FWR**  
**BOBIJNEN Diameters 8 - 20 mm**



**Verkoopkantoor:**

FERALPI STAHLHANDEL GmbH  
Gröbaer Strasse, 3  
DE-01591 RIESA

Telefoon: +49 (0) 3525 749 220, Fax: +49 (0) 3525  
749 119, E-mail:  
ralf.schilling@de.feralpigroup.com



**Annexe au certificat produit BENOR no. 270/2046/0046 délivré le 19.06.2026.**

**Unité de production :**

ESF Elbe-Stahlwerke Feralpi GmbH  
Gröbaer Strasse, 3  
DE-01591 RIESA

Téléphone : +49/352 574 90  
Fax : +49/352 574 910 9  
E-mail : info@feralpi.de

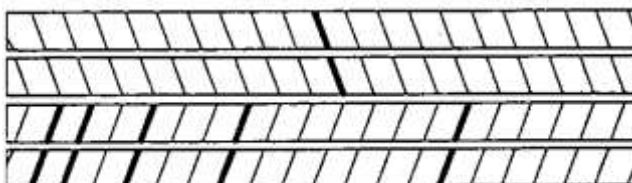
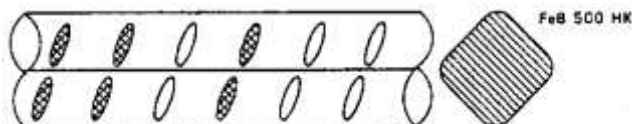
**Marque de laminage : 0/1/2/6**

**Produits :**

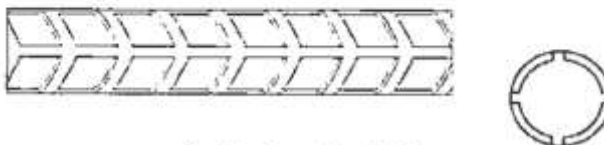
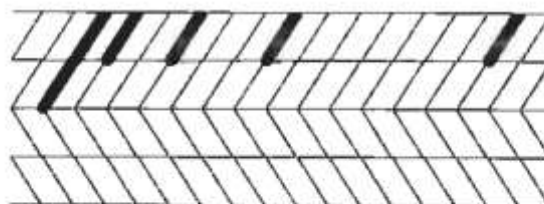
**LAMINE BE 500 S**  
**BARRES Diamètres 10 - 40 mm**



**LAMINE ETIRE BE 500 TS**  
**BOBINES Diamètres 8 - 16 mm**  
**BARRES Diamètres 8 - 12 mm**

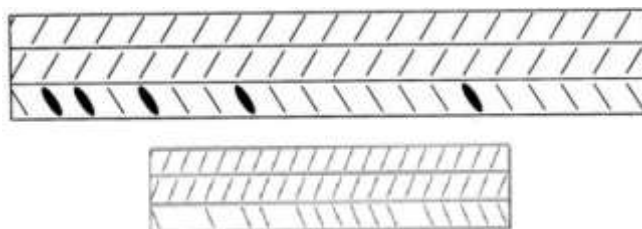


**LAMINE ETIRE BE 500 TS FWR**  
**BOBINES Diamètres 6 - 20 mm**  
**BARRES Diamètres 6 - 14 mm**



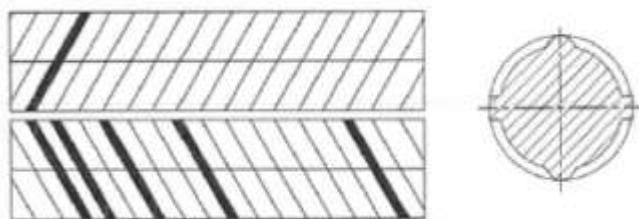
*0 1 2 6 op 1 ribrij*

**TREFILE DE 500 BS**  
**BOBINES Diamètres 6 - 12 mm**  
**BARRES Diamètres 6 - 12 mm**





**LAMINE BE 500 S FWR**  
**BOBINES Diamètres 8 - 20 mm**



**Organisme de vente :**

FERALPI STAHLHANDEL GmbH  
Gröbaer Strasse, 3  
DE-01591 RIESA

Téléphone : +49 (0) 3525 749 220, Fax : +49 (0)  
3525 749 119, E-mail :  
ralf.schilling@de.feralpigroup.com

**Annex to the BENOR product certificate nr. 270/2046/0046 delivered on 19.06.2026.**

**Production unit:**

ESF Elbe-Stahlwerke Feralpi GmbH  
Gröbaer Strasse, 3  
DE-01591 RIESA

Phone: +49/352 574 90  
Fax: +49/352 574 910 9  
E-mail: info@feralpi.de

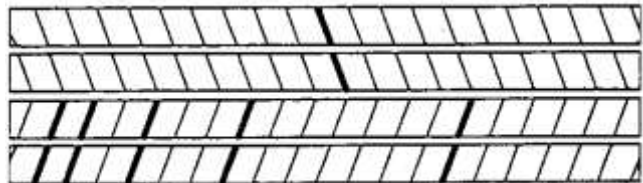
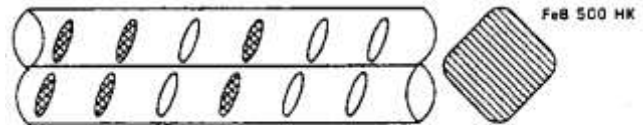
**Rolling mark: 0/1/2/6**

**Products:**

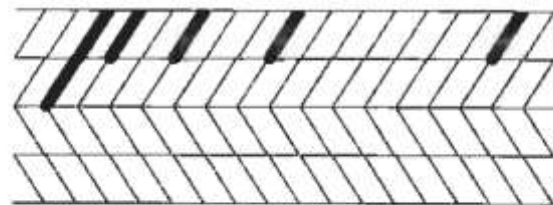
**ROLLED BE 500 S  
BARS Diameters 10 mm - 40 mm**



**ROLLED STRETCHED BE 500 TS  
COILS Diameters 8 - 16 mm  
BARS Diameters 8 - 12 mm**



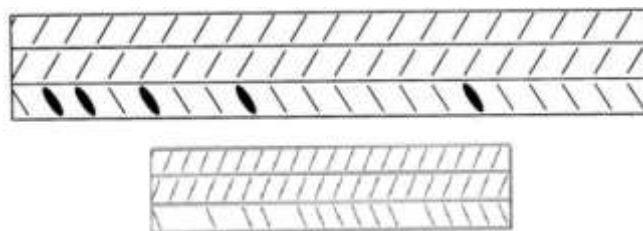
**ROLLED STRETCHED BE 500 TS FWR  
COILS Diameters 6 - 20 mm  
BARS Diameters 6 - 14 mm**



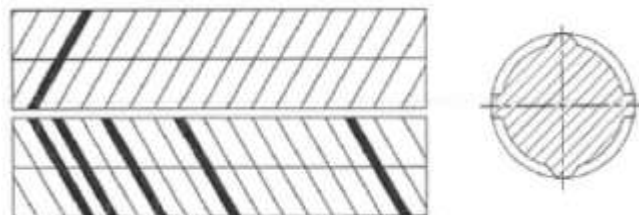
**0 1 2 6 op 1 ribrij**



**DRAWN DE 500 BS**  
**COILS Diameters 6 - 12 mm**  
**BARS Diameters 6 - 12 mm**



**ROLLED BE 500 S FWR**  
**COILS Diameters 8 mm - 20 mm**



**Sales office:**

FERALPI STAHLHANDEL GmbH  
Gröbaer Strasse, 3  
DE-01591 RIESA

Phone: +49 (0) 3525 749 220, Fax: +49 (0) 3525  
749 119, E-mail:  
ralf.schilling@de.feralpigroup.com